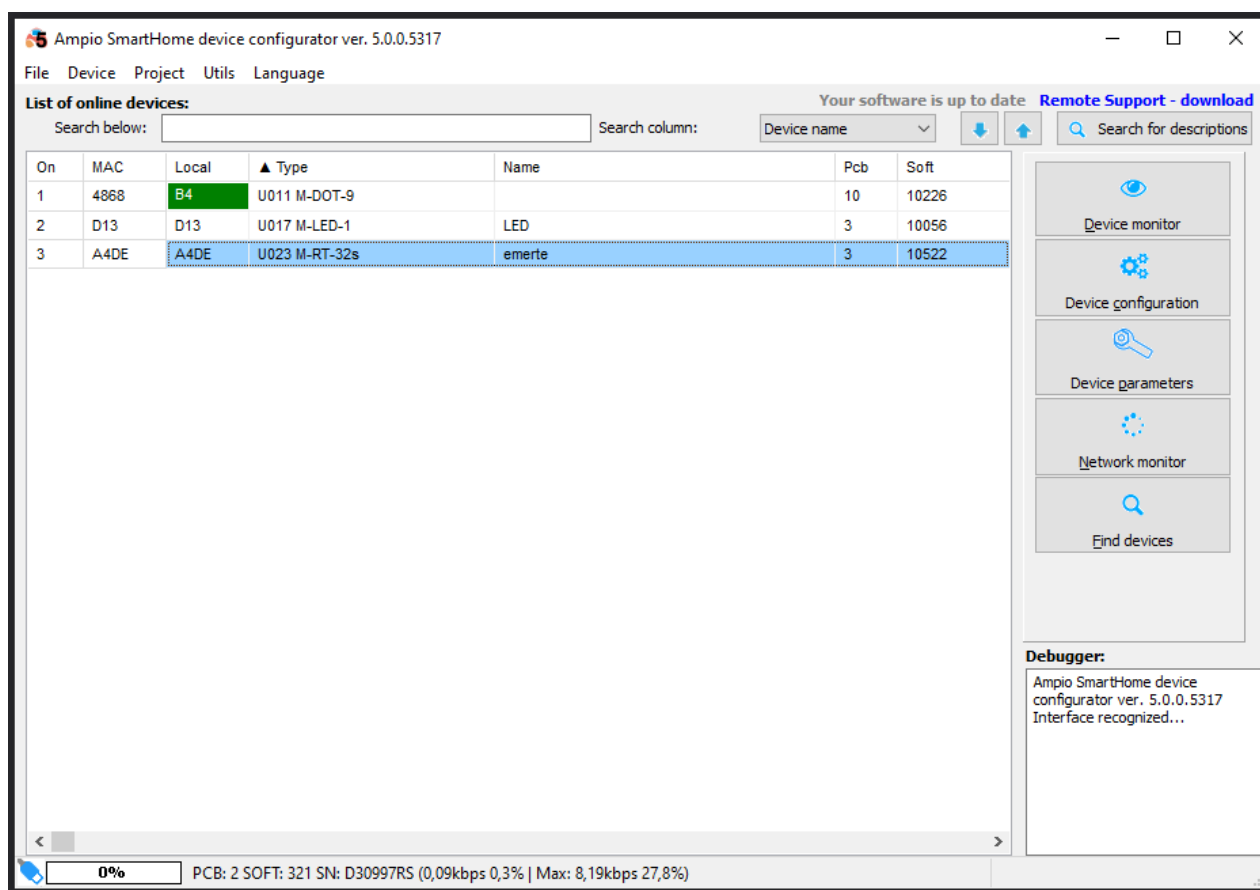


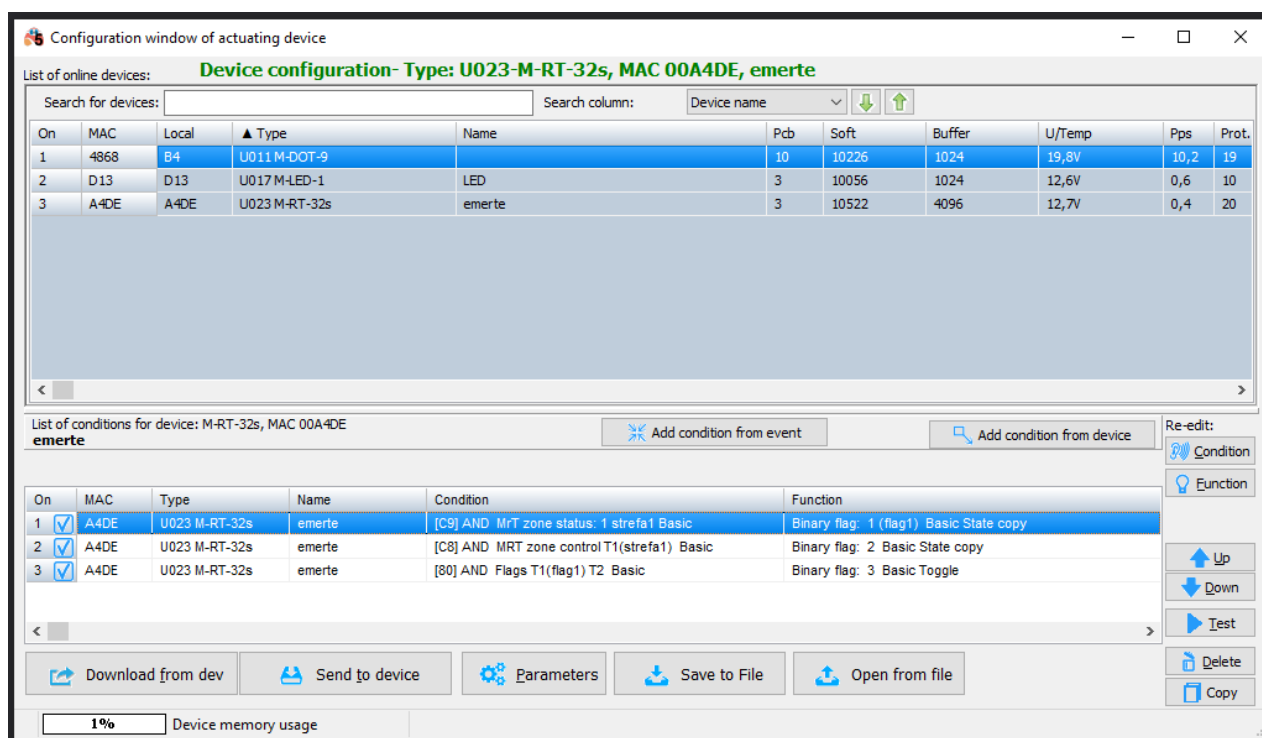
Initiating the "departure" mode in a heating zone

Document number: PO-097-EN Version: 1.0 Date of publication: April 11, 2022

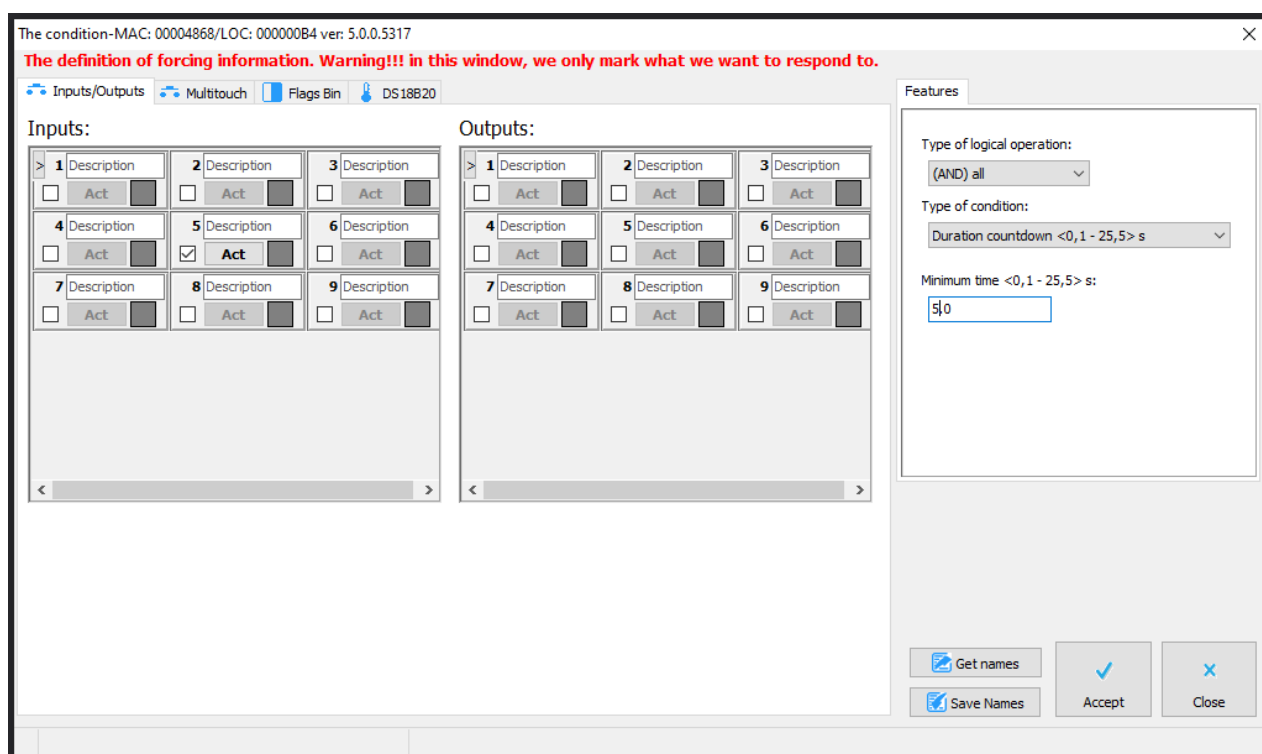
In order to initiate the appropriate heating mode for one or multiple heating zones, you have to create a condition in the Ampio Smart Home configurator. Select a device that controls heating zones on the list and go to the *Device configurator*.



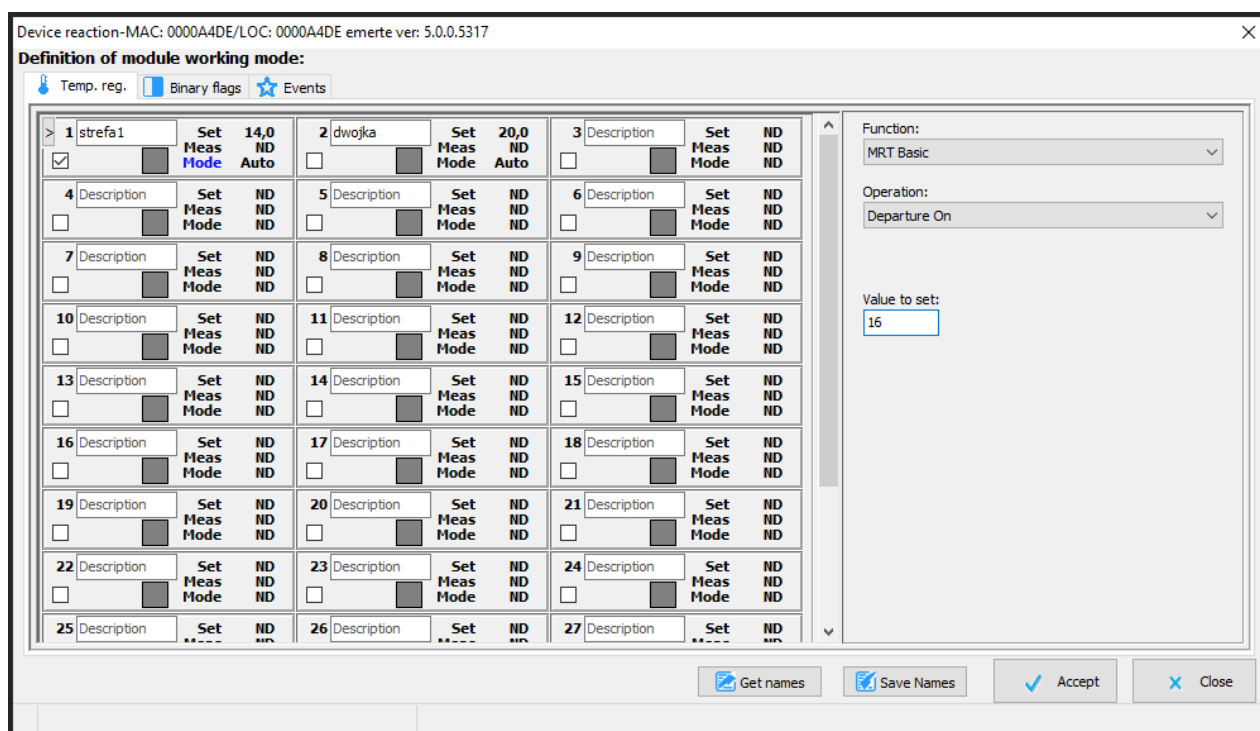
The condition is created from an M-DOT touch panel. Select the correct module on the configuration list and click *Add condition from device*.



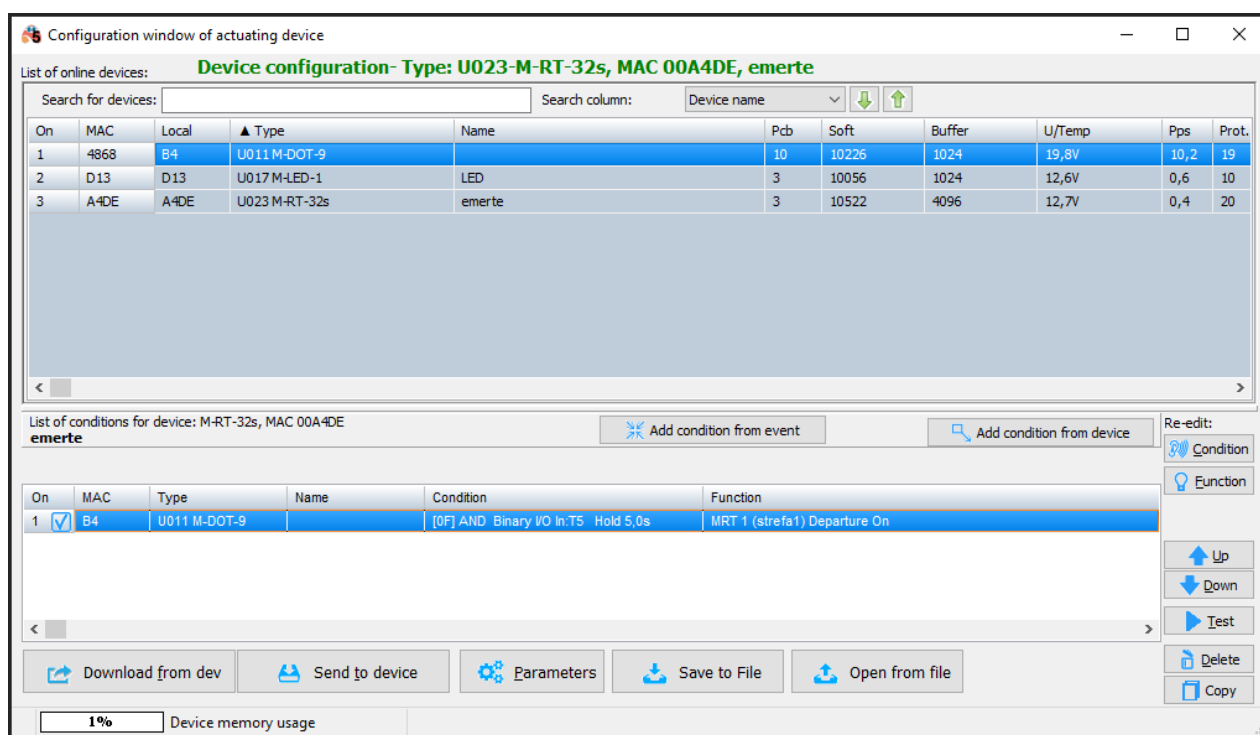
Then, create a function for the condition. In this case, the panel's field number 5 has to be pressed for at least 5 seconds.



After confirming the function, select the mode (Operation) for a given zone. For the purpose of this example, "Departure on" was chosen.



In order to save the new condition, it is necessary to send it to the device.



From now on, pressing the right touch field in will initiate the *Departure* mode.